

A beautiful image of the Hindmarsh Bridge
photograph by Kaylene Maalste

editors note ...

The current edition of Focus, Shutterbugs Newsletter, has been created by Lea while Gary is away enjoying an overseas trip .. Safe and Happy travels Gary.

This edition should really be titled '**Out of Focus**'

Next Shutterbugs Meeting
Friday 28th June, 2019
Meeting starts 1.30pm Sharp



Inside this Issue

- * **Pelican Bill ~ 'Google Photos'**
article by ~ Kaylene Maalste
- * **Polarising Filters**
article by ~ Andrew Chuck
- * **Dog's Day Out on the Fleurieu**
article by ~ Julie Barrien
- * **Wrap-up of May Meeting**
- * **Final Shot Images**
- * **June 2019 Challenge**
'Town or District Icons'
- * **Field trip to Strathalbyn**
- * **Workshop with Mike**
- * **Next Shutterbugs Meeting**
Friday ~ 28th June, 2019
1.30 pm 'Sharp'



May Meeting Wrap-Up

Today was another enjoyable afternoon at Shutterbugs. Although we had no hands on workshop, we had a practical demonstration of Photoshop Express.

This Months challenge of Architecture produced a variety of photographs of buildings as well as architectural features ... well done.

Kaylene



Ayers House ~ North Terrace by Beth Nixon

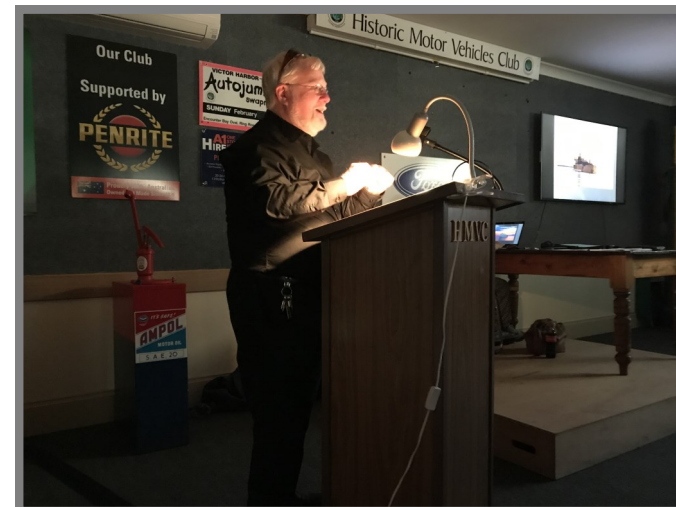
Demonstration of Photoshop Express

Photoshop Express is a free editing program suitable for Apple and Android devices, it can also be used on a PC. The program is not difficult to use with menu icons for editing for contrast, cropping saturation and many more features.



Guest Speaker ... Trevor Powell OAM

Today Trevor Powell OAM gave us an interesting talk on 'Maritime Photography of Port Adelaide/Outer Harbour'. Trevor began with the early history and development of the area. What followed was Trevor's record of the different vessels that come in and out of the harbour, and the various wildlife to be seen along the river. It is truly obvious that Trevor is passionate about Port Adelaide and we had an enjoyable time sharing his passion.



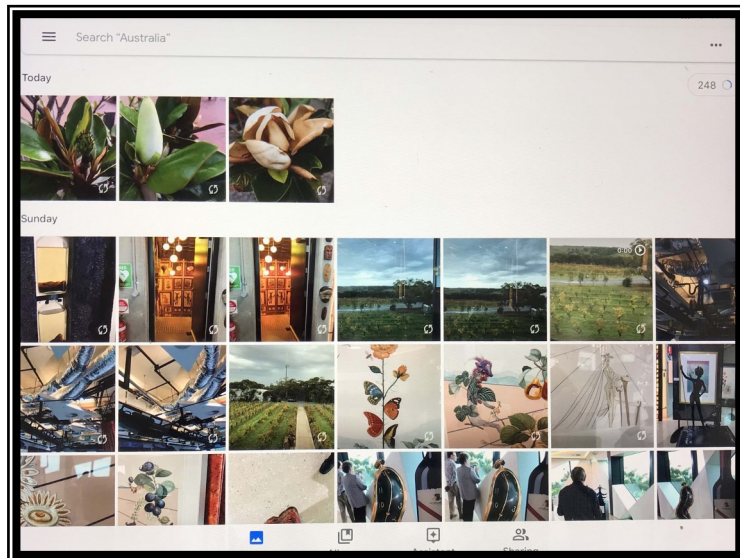
What App is that - Google Photos



I have talked about different apps for taking better photos by knowing where the sun is etc. So now I want to talk about storage, with the growing use of iPhone photography this is important, of course you can download your photos to your computer, but let's see what is on offer.

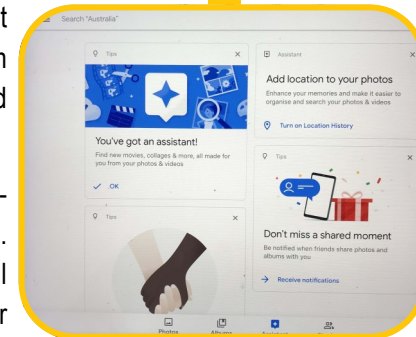
GOOGLE PHOTOS

When you open Google Photos you will be asked to gain access to your photos, then you are given choices of how you want to backup; there is High Quality but your file size is reduced and then there is Original with image full resolution but this will count against your quota. Then you sign in. What happens next is you will see all your photos according to day or date. In the bottom menu you can view by Photos, Albums, there is an Assistant and Sharing icon.



When you click on the Assistant icon there are Tips that come up and it is up to you what you want to select from Add Location, Notification when a friend shares photos and albums with you, and a Share automatically feature.

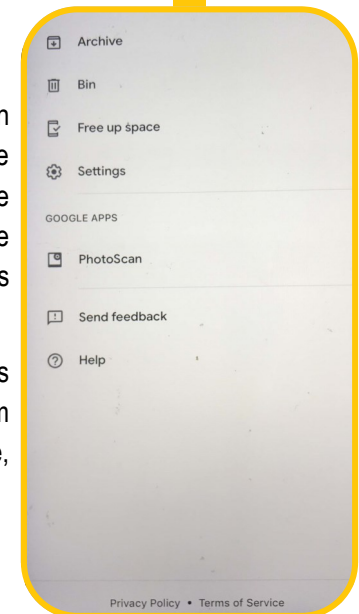
Now with Sharing you add partner account that gives someone access to all your photos (my comment "No, no, no"). But if you wanted to share an event etc. you can collect all the photos you want to share and then pass along to your friends.



Back on the main page there is a search feature, here you can do a number of actions, if you select "Free Up" it gives you the option to delete a number of photos, I was told I could delete 106 items because they had been backed up to my Google Account. You can Archive, Bin, and change and look at Settings in this menu.

It is free, would I use it I am not sure, it seems to have access to photos that are already on my computer, and this differs from the small number of photos I have taken recently on my phone, so I suspect it has access to my PC, but it maybe for you.

Cheers ... Kaylene



Using Polarising and Neutral Density Filters

The first thing that most of us grab on a bright sunny day are our sunglasses!

I feel sure that over the years most of us have realised that a good pair of polarised sunglasses not only protect our eyes but cut glare, enhance the colours of the sky and allow us to see further into water.

In fact when it comes to looking into a body of water they can transform it, revealing the beauty of what lies below.

The lens of our camera, like our eye, can only capture what it can see. So why don't they make sunglasses for your camera?..... Well they do!

Polarising Filters

Most of the cameras that we use these days have a thread at the end of the lens that will accept a screw filter. If your camera is an Autofocus one, as most of us have, you'll need a 'circular polariser'. Take note of the diameter of your lens before making a purchase as there is a large variety of lens sizes.

I am sure that some of you will say "Why do I need a polarising filter? I can add a polarising filter in my post production software," and this is true. However, keep in mind what I said previously, 'your lens can only capture what it can see' and no amount of post production enhancement will reveal those tropical fish or the whale that is just below the water surface.

Circular polarising filters are made with two lenses, a fixed lens at the rear and a rotating lens at the front. By rotating the front element of the filter you'll notice that colours and reflections in your shot change. Once you've got it to a point that you like simply take the shot.

Be aware that shooting in low light, overcast days or at night with a polariser is not advisable – again it's like wearing sunglasses and we don't general wear them in these conditions.



With Polarising Filter

No Polarising Filter

Neutral Density Filters

No doubt you have seen those landscape photos where the water appears silky smooth, the cloud streak across the sky or the ocean waves look more like fog. How are they done? They are long exposure images where the shutter speed is often measured in full seconds rather than fractions of a second. However, in bright sunlight how can you leave the shutter open for this amount of time without over exposing the image? The answer is once again, sunglasses, or more accurately the Neutral Density Filter.

How dark the filter is, is typically described in how many "stops" of light it reduces compared to an exposure without the filter and this is where it can become complicated, but doesn't need to be.

My suggestion to anyone who is considering buying an ND Filter for the first time is to start with a 6 stop filter, as the auto exposure metering on most cameras will still work with the density (darkness) of this filter.

Then head to the beach. With the ND Filter attached to the screw thread on your lens and the camera mounted on a sturdy tripod it's time to begin.

Let's start in Aperture Priority mode with the ISO set to 100. This will allow your camera to choose the correct shutter speed. Try a test shot at F5.6 and look at the result. The sea not milky enough for you? Then just keep closing the aperture down until you get the desired result. As you close the aperture you will notice that your shutter will remain open for longer periods. If you have a remote shutter release it will help to stop camera shake, however if you don't you can set your delay timer to achieve the same result.

If you have reached your most closed aperture (on most lenses this will be between F16 and F22) and you still require a longer shutter duration you can change your ISO to 64 if this is available on your camera. Failing that it's time to explore a 9 stop ND Filter or just come back to the spot later in the day.

Happy Snapping Andrew Chuck



Dogs' Day Out on the Fleurieu

A variety of dogs and their owners attended this Dog-themed family fun day at Lakala Park, organised by the Port Elliot Town & Foreshore Improvement Association.

It featured a unique art show with a diverse range of exhibits, including artworks made by dogs. Prize money totalled \$1300.

The canine-themed activities included the popular doggy dress-up parades, displays, demonstrations, stalls, barbeque fare and cupcakes.

The show was opened by the federal member for Mayo, Rebekha Sharkie, who also judged the doggy dress up parades.

The Royal Society for the Blind (RSB) southern contingent gave an interesting display and information session on the activities of their members, who include puppy educators and volunteer trainers. The service provides trained dogs for vision impaired people, children with Autism and people with Post Traumatic Stress Syndrome (PTSD).

Volunteer Puppy Educators to provide a positive environment and training for RSB Guide and Assistance Dog pups so that they grow to become an invaluable mobility aid and companion for people with a specific need.

The local State Emergency Services (SES) dog search and rescue group showed how a trained dog can search out and locate a missing person. Two volunteers were very quickly found by one of their dogs.

The SES's Dog Operations Unit supports SAPOL's Dog Operations Section in searches involving tracking and air scenting for both missing persons and articles with human scent contamination.

This Unit has been operational since 1997 and as a functional arm of the State Special Operations Group, is required to maintain a state of preparedness to respond to emergency incidents and allied activities in accordance with defined standards of response.

The Dog Operations Unit is located at Technical Rescue, 480 Grand Junction Road Angle Park and also at the Royal Society for the Blind, Gilles Plains. Training occurs at metropolitan and rural locations such as Mount Crawford and Para Wirra. The Unit conducts two training sessions a week, on Thursday evenings from 7.30pm and Sundays from 8.00 a.m. Thursday training is usually held at Angle Park but may be held at Gilles Plains as training needs dictate

The primary role of the Unit is to support the SAPOL Dog Operations Section in searches involving tracking and air scenting for both missing persons and articles with human scent contamination. In addition, the unit is active in assisting rescue Units in the conduct of reconnaissance work at times of major flood or storm damage. It also has an active participation at public events such as the Royal Adelaide Show, Police Expo and various rural Field Days.

A riverland town in South Australia is home to the only operational canine SES search and rescue team in the state's regions, with one canine leading the pack.

Loxton SES unit manager Gemma Wood started the program with her pooch Jagger and father Danny after five years of hard research and training in what she described as her life's dream.

"I saw what I define as a need for something that we weren't quite meeting, from there I just did years of research and figured out how we could meet that need," Ms Wood said.

Earlier this month, Jagger assisted South Australian Police to find a missing person in Adelaide, ticking off his fourth successful search.

Jagger was crowned the first SES search dog in the state to find a missing person last year, and the program has only had positive results since.

About Our Members

Members within this Unit, participate either as Dog Handlers or Support Member. Both roles are very important to the success of the unit.

Dog Handlers bring their own dogs into the unit and must be prepared to commit to the daily responsibilities of exercising, and training a dog in obedience and agility. Expenses for the dog such as working equipment, food and annual veterinarian vaccinations and check up are only provided by SES to operational dog teams. The dog and handler must work towards and pass the "Operational Standards" set by the SES Dog Operations.

Dog Handlers need to have a keen interest in dog training and the enthusiasm to maintain their training with the dog while at home. Regular Dog Operations Unit training and continuous assessment of dog teams is carried out. This an integral part of the training commitment required of the SES dog handler.

Support Members are trained to work side-by-side with the Dog Handlers and the dogs to carry out search and rescue operations and allied duties. The support member, although not having responsibility for training or care of a dog, must be committed to participating in regular training and operational response to achieve and maintain the required standards of competence as a support member.

Both support Members and Dog Handlers have training which may include

- SES Dog Operations Unit Induction
- Map reading / GPS navigation
- Communication
- Land search operations
- Reconnaissance and First Aid

Dogs' Day Out on the Fleurieu

There is no maximum age for members of the Dog Operations Unit. However, a good level of health and fitness is required for both Support Members and Dog Handlers as they are required to walk long distances and often over rough terrain whilst training or in operation.

Join Us

If you meet the following criteria then you should phone the SES to enquire about joining the Dog Operations Unit on 1300 364 587 during office hours, or fill in the online form.

- ➔ Over 18 years of age.
- ➔ Have reasonable health and fitness.
- ➔ Keen to work with dogs and learn new skills.
- ➔ Available for training sessions and incident callouts.

Julie Barrien ~ *Dog Lover*



Dog's Day Out Organiser Ruth Miller and Federal member for Mayo Rebekha Sharkie



Royal Society for the Blind (RSB) volunteer puppy educators and their guide dogs in training. On the right is an actual RSB client and her dog.



State Emergency Services (SES) dog and handler show how to track a missing person



Raffle Basket & Tents at the Dogs' Day Out

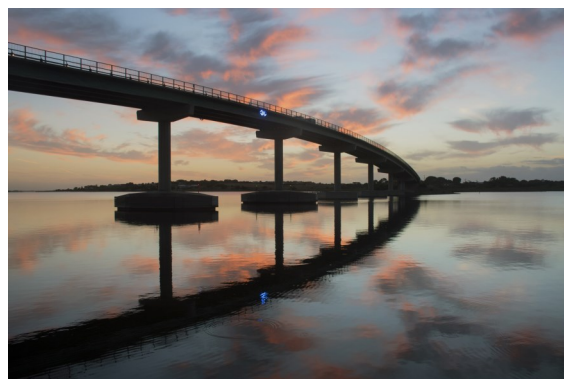


At the Dog's Day Out

CHALLENGE for JUNE

Town/District Icon(s)

The June challenge is to photograph an icon that you feel represents a town or district, it does not have to be your local town or district. There are no guidelines on how to take your photos, but you may want to look for a different composition, or different angle, and see if the time of day makes the photograph your own. I am going to use the Hindmarsh Island Bridge as an example. Photo 1 the bridge was taken early morning when the water was still giving me a reflected image of the bridge. Photo 2 is a different time of day and although the bridge is still reflected it has a different feel, and Photo 3 was taken from a different perspective, giving the viewer a sense of power and strength of the bridge.



EVENTS

At the moment we are planning a field trip to Strathalbyn, to make it a fun day out we will be having a "Photographic Treasure Hunt" ending with afternoon tea at one of the coffee shops in High Street. We will meet at the Soldiers Memorial Gardens and from there you will be given instructions on what to find and photograph. Time and date to be decided.



EXHIBITION

The City of Onkaparinga is having a competition/exhibition called "2019 Young At Heart Art & Craft Exhibition". It is designed to showcase the talents of the over 50's. There is a photographic section for colour and black and white photographs framed or unframed, exhibits exceeding 80cm x 80cm will attract an additional fee. Entry forms must be completed and returned by 5pm 27th September 2019. There is an entry fee of \$5.00 per exhibit and a maximum of 6 entries. I am happy to pass on the email with the entry forms and other information as it is not on the web page.

WORKSHOP - Creative Use of Aperture by Mike Connell

Our next workshop will be at the June 28th meeting. Mike has kindly agreed to come and talk to us about the creative use of Aperture, it will build on the talks that Julie gave us about Aperture Priority. It will be a hands on workshop after Mike's talk, so please bring your camera and tripod (if you have one), you will be taking practice images that will creatively use Depth of Field.



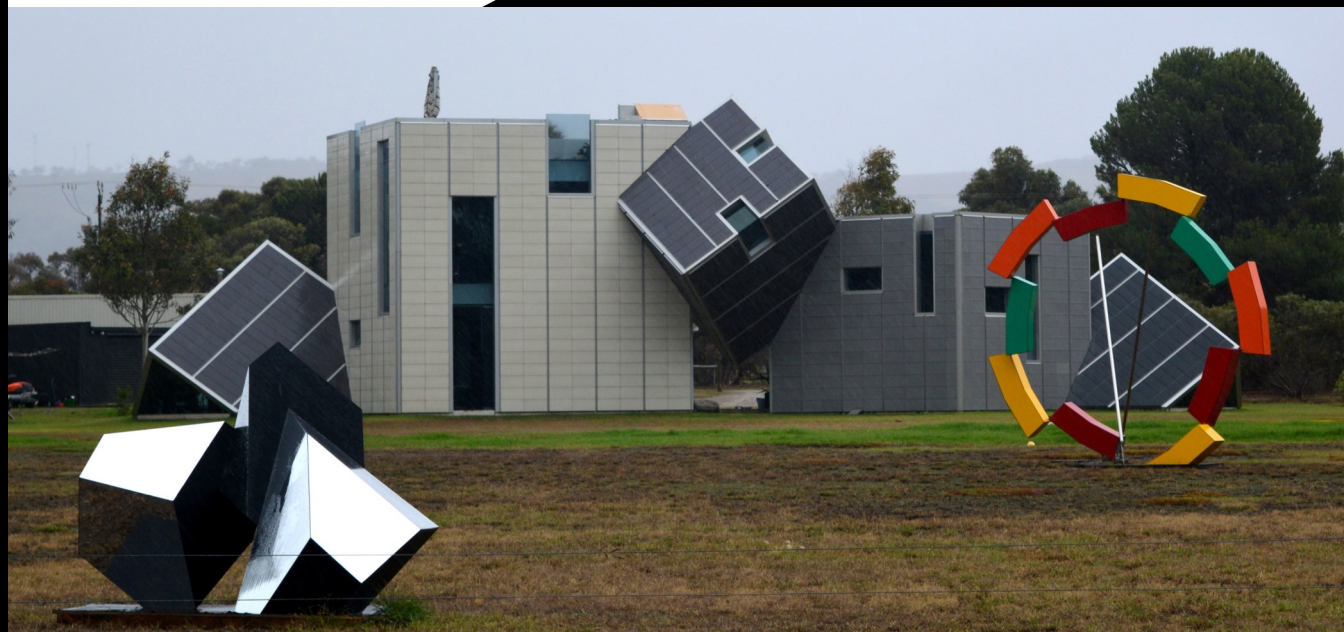


Victor Harbor Railway Station

Photograph by Marilyn

ABC1

Photograph by Graham Lewis





Steaming Pork
Dumplings

Photograph by
Sue Willett